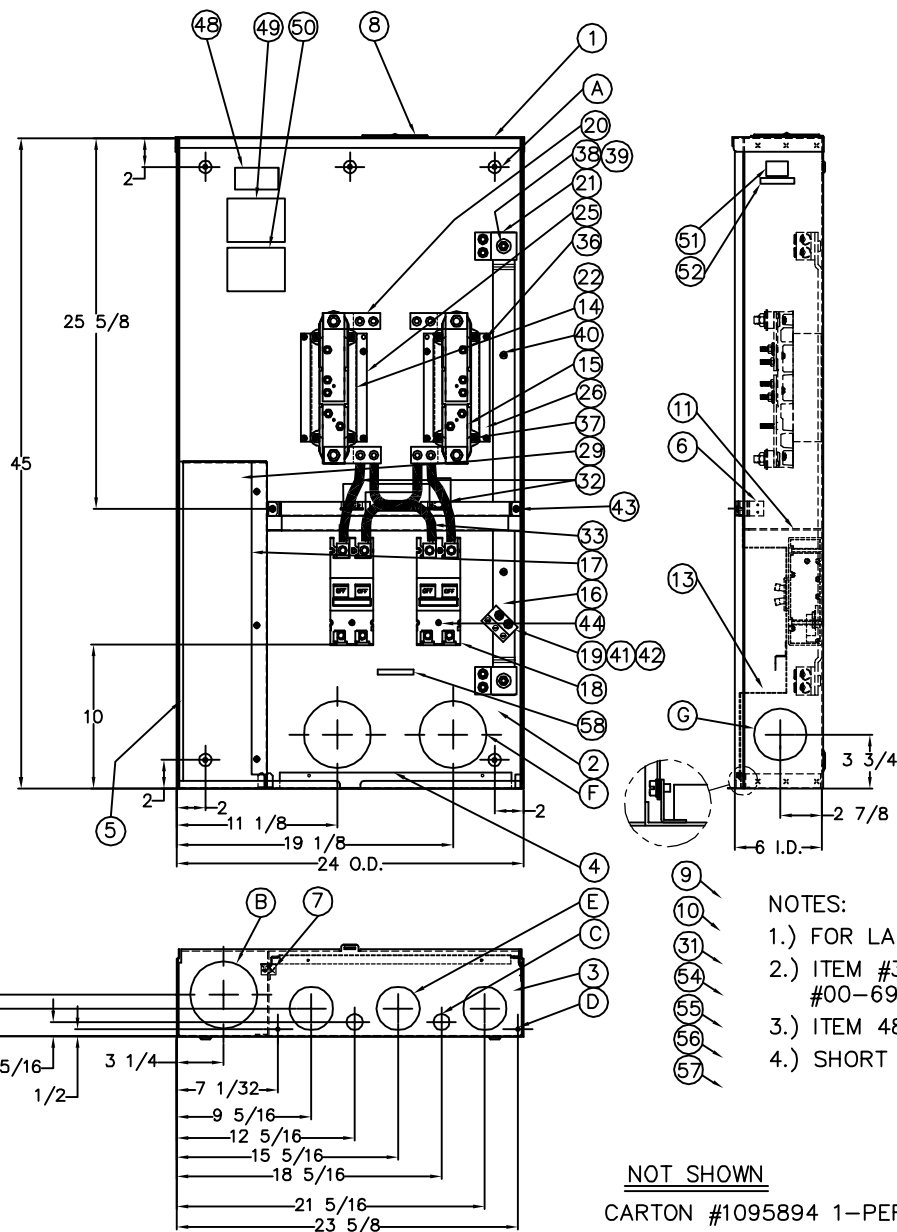


CAT. NO.	C/B IT.18
U5067-X-2/200	#1027398
U5067-X-2/225	#1007856

57	1	LABEL #1025027 (LOC. ON DEAD FRONT)
58	1	LABEL #1025341

BILL OF MATERIAL		DESCRIPTION
A	5	U/L MTNG. EMBOSS
B	1	3", 3 1/2", 4" CONC. K.O.
C	2	1/2" 3/4" CONC. K.O.
D	2	1/4" SOLID K.O. (.250 DIA.)
E	3	1", 1 1/2", 2", 2 1/2" K.O.
F	2	1 1/2", 2", 2 1/2", 3", 4" K.O.
G	1	1 1/2", 2", 2 1/2", 3" K.O.
1	1	TOP #1094603
2	1	BACK #1094615
3	1	BOTTOM #1094616
4	1	ANGLE #1094618
5	1	ANGLE #1094619
6	1	ANGLE #1025451
7	1	ANGLE #1094621
8	1	CLOSING PLATE #1001186
9	1	FRONT ASS'Y #1100746
10	1	FRONT ASS'Y #1100757
11	1	CENTER BOTTON WELD. #1100768
13	1	DEAD FRONT WELD.#1100776
14	1	LEFT BLOCK ASS'Y #1002455
15	1	RIGHT BLOCK ASS'Y #1002456
16	1	GROUND BUS ASS'Y #1094593
17	1	BARRIER WELD. #1100784
18	2	BREAKER (SEE CHART)
19	1	CONN. #1026583
20	4	CONN. #1003133
21	2	CONN. #1003134
25	1	BRIDGE #1002187
26	1	BRIDGE #1002197
29	1	FRONT #1094495
30	1	PLATE #1093769 (SEE NOTE #2)
31	1	INSULATOR #1002205
32	2	8" 4/0 BLK. FORMED WIRE #1105061
33	2	10" 4/0 BLK. FORMED WIRE #1105062
36	8	BRIDGE TO BACK SCW. #1000183
37	8	BRIDGE TO BLOCK SCW. #1001287
38	2	FLAT WASHER #1001270
39	2	3/8 HX NUT WHIT BELLE #1001273
40	2	GROUND TO BACK SCW. #1001278
41	2	SCW. #1001277
42	2	FLAT WASHER #1000042
43	7	SCW. 10-32 #1001290
44	4	BRKR. TO BACK SCW. SUPPLIED W/BRKR.
48	1	LABEL, HUB #1000044 Loc."B" (SEE NOTE 1 & 3)
49	1	LABEL #1003414 (CAUTION) LOC. AS SHOWN
50	1	LABEL #1003415 (WARNING) LOC. AS SHOWN
51	1	U/L LABEL #1047140 LOC. "A" (SEE NOTE #1)
52	1	STAMP CAT. NO.
53	1	RATING LABEL #1094665
54	1	LABEL #1000064 LOC. (OUTSIDE
55	2	UPPER LEFT CORNER OF FRONT)
55	1	LABEL #1025219 LOC. "F" (SEE NOTE)
56	1	LABEL #1025109 (LOC. ON DEAD FRONT)



- NOTES:
- 1.) FOR LABELING LOC. SEE DWG. #1096668.
 - 2.) ITEM #30 TO HAVE RUBBER STAMP DWG. #00-6920 APPLIED.
 - 3.) ITEM 48 WILL ALWAYS BE INSTALLED.
 - 4.) SHORT RISER ON RIGHT SIDE.

NOT SHOWN

CARTON #1095894 1-PER

SHELL WELDMENT #1100741

REVISIONS:	G 10/9/11/03	IT. 55 WAS 709727, ALT. 3605	MD E I	7/19/06	UPDATE PICTORIAL; ITEM 41 WAS 1001288 (ECO #14961)	D.F. S
	H 10/06/03	IT. 55 WAS 1105756	MD ER J	1-23-07	IT. 1047140 W 1002914 ECO. 15552	DL E
	H1 10/7/05	UPDATE PICTORIAL OF SIDE VIEW (ALT 6046)	D.F. P			
	H2 3/22/06	UPDATE PICTORIAL OF ITEMS 3 & 4 (ECO #14515)	D.F. F4			
MILBANK MFG. CO.						
GENERAL OFFICES			KANSAS CITY, MO.			
DRAWN BY	VM	SCALE	NTS			
CHECKED BY	LAL	DATE				
APPROVED		DATE	11-06-02			